

Key Investor Information

This document provides you with key investor information about this fund. It is not marketing material. The information is required by law to help you understand the nature and the risks of investing in this fund. You are advised to read it so you can make an informed decision about whether to invest.

True Potential Schroders Cautious A Accumulation Shares ISIN: GB00BWDBHK23 A Income Shares ISIN: GB00BWDBHJ18

The Fund is a Sub-Fund of True Potential OEIC 2.

The Authorised Corporate Director of the Fund is True Potential Administration LLP, part of the True Potential LLP group.

| Objectives and Investment policy | Risk and Reward profile | | | | | | | |
|---|--|---|---|---|---|---|---|---|
| <p>The Fund aims to deliver long term growth over a rolling five-year period in excess of inflation (UK Consumer Price Index).</p> <p>There is no guarantee that the Fund will achieve a positive return over the above, or any other period and investors should be aware that their capital is at risk.</p> <p>Recommendation: this fund may not be appropriate for investors who plan to withdraw their money within 5 years.</p> <p>The Fund is actively managed, which means that the manager chooses the mix of the portfolio, and the Fund is not tracking the benchmark nor is the Fund constrained by the value, price or components of that benchmark or any other aspect. The benchmark is a minimum target for the Fund, where the target return of the Fund aims to match or exceed the return of that benchmark.</p> <p>The Fund will invest mainly (at least 50%) in other investment funds.</p> <p>The Fund may also invest in: Closed-ended funds, shares, bonds (issued by governments and other organisations), exchange traded commodities, deposits, cash, money market instruments (investments usually issued by banks or governments that are a short-term loan to the issuer by the buyer) and exchange traded funds.</p> <p>The Fund may hold up to 100% of its assets in other investment funds.</p> <p>The Fund will have exposure to both United Kingdom and overseas markets.</p> <p>The Fund may use derivatives (a financial instrument whose price is dependent upon or derived from one or more underlying assets) for Efficient Portfolio Management (EPM), i.e. to protect against market or currency movements, to reduce costs, or to earn income or capital. The Fund may only use derivatives and forward transactions for investment purposes on the giving of 60 days' notice to shareholders. The Fund does not currently use derivatives and forward transactions for investment purposes.</p> <p>Income Shares: Any income the Fund generates will be paid out to you. Accumulation Shares: Any income the Fund generates will be reinvested.</p> <p>You can buy and sell shares on any working day in London, excluding UK public and bank holidays.</p> <p>For full investment objectives and policy details please refer to the Prospectus.</p> <p>Please be aware there is no guarantee that this fund will meet its investment objectives.</p> | <p>The Risk and Reward Indicator demonstrates where the Fund ranks in terms of its potential risk and reward. The higher the rank the greater the potential reward but the greater the risk of losing money. It is based on past data, may change over time and may not be a reliable indication of the future risk profile of the Fund. The shaded area in the table below shows the Fund's ranking on the Risk and Reward Indicator.</p> <p>Typically lower rewards Lower risk</p> <p>Typically higher rewards Higher risk</p> <table border="1" data-bbox="869 698 1573 743"> <tr> <td>1</td> <td>2</td> <td>3</td> <td style="background-color: #cccccc;">4</td> <td>5</td> <td>6</td> <td>7</td> </tr> </table> <p>The Fund is in a medium category because the price of its investments have risen or fallen to some extent. The category shown is not guaranteed to remain unchanged and may shift over time. Even the lowest category does not mean a risk-free investment.</p> <p>The price of the Fund and any income from it can go down as well as up and is not guaranteed. Investors may not get back the amount invested. Past performance is not a guide to future performance.</p> <p>Investment Fund Risk - This Fund invests into other investment funds, they may invest in different assets, economic sectors, or countries (including emerging markets) and therefore have different risk profiles not in line with those of this Fund.</p> <p>Performance Risk - Investment objectives express an intended result but there is no guarantee that such a result will be achieved. Depending on market conditions and the macro-economic environment, certain investment types and styles may perform better than others and investment objectives may become more difficult to achieve.</p> <p>Emerging Market Risk - Investments in emerging markets may involve greater risks due to political and economic instability, and underdeveloped markets and systems.</p> <p>Counterparty Risk - There may be cases where the organisation from which we buy a derivative, or an asset, fails to meet its obligations. The Fund's cash deposits are also subject to counterparty risk.</p> <p>Derivative Risk - The Fund is entitled to use derivatives. Derivatives may not achieve their intended purpose. Their prices may move up or down significantly over relatively short periods of time which may result in losses greater than the amount paid.</p> <p>Operational Risk - The Fund faces non-market risk, relating to purchasing, holding and servicing the Fund's assets.</p> <p>Credit Risk - Where the Fund invests in bonds, there is a risk the bond issuer may fail to meet its repayments. Changes in interest rates, inflation and the creditworthiness of the bond issuer may also affect the bond's market value. This risk is particularly relevant where the fund invests in bonds with a lower credit rating.</p> <p>Exchange Rate Risk - The Fund may invest in securities not denominated in GBP. The value of your investments may be affected by changes in currency exchange rates.</p> <p>Liquidity Risk - Certain Market conditions could make sufficiently liquid assets difficult to sell quickly at a fair price. This could result in an unpredictable fall in the value, and overall liquidity of the Fund.</p> <p>The above risks may cause losses in the Fund. For full details on risk factors for this Fund, please refer to the Prospectus.</p> | 1 | 2 | 3 | 4 | 5 | 6 | 7 |
| 1 | 2 | 3 | 4 | 5 | 6 | 7 | | |

Charges

The charges you pay are used to pay the costs of running the Fund, including the costs of marketing and distributing it. These charges reduce the potential growth of your investment.

One-off charges taken before or after you invest

Entry Charge: **0.00%**

Exit Charge: **0.00%**

These are the maximum charges that we might take out of your money before it is invested and before we pay out the sale proceeds of your investment.

Charges taken from the Fund over a year

Ongoing Charges **1.19%**

Charges taken from the Fund under specific conditions

Performance Fee **None**

The ongoing charges figure is based on the last year's expenses and may vary from year to year.

It excludes:

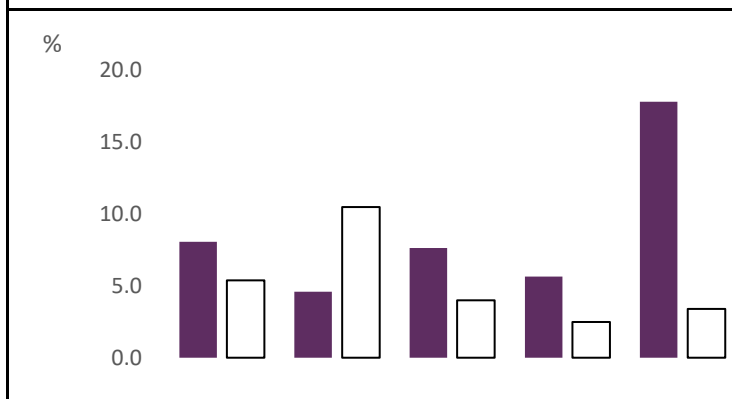
- the costs of buying or selling assets for the Fund (unless these assets are shares of another fund).
- any temporary fee reductions which may apply for short periods (up to six months).

The Fund's annual report for each financial year will include detail on the exact charges made.

The ongoing charges figure is calculated as at 31/01/2026.

For further information about charges, please refer to relevant sections in the fund's prospectus at www.truepotential.co.uk/fund-documents

Past Performance



| | 2021 | 2022 | 2023 | 2024 | 2025 |
|--------------|------|------|------|------|------|
| ■ Fund (Acc) | 8.1 | 4.6 | 7.6 | 5.7 | 17.8 |
| □ Target* | 5.4 | 10.5 | 4 | 2.5 | 3.4 |

Source: True Potential Administration, ONS

• You should be aware that past performance is not a guide to future performance.

• Fund launch date: 22/06/2015.

• Share class launch date: Acc: 22/06/2015, Inc: 22/06/2015.

• Performance is calculated in Great British Pounds (£).

• All charges and fees, except any entry, exit or switching charges, have been included within the performance

• The Fund was originally a Non-UCITS Retail Scheme and converted into a UCITS on 27/12/2019, as such, past performance prior to this date is not shown.

• This benchmark is a target for the Fund, and the Fund is not tracking the benchmark nor is constrained by it.

• *UK CPI (Consumer Price Index)

Practical Information

- The Depository of the Fund is Northern Trust Investor Services Limited.
- You can get further information on the Fund, including how to buy and sell units, from the Prospectus and the annual and half-yearly reports and accounts, which are in English only. You can get copies of these free of charge, by telephoning **0191 500 8807** or by visiting www.truepotential.co.uk/fund-documents.
- The latest unit prices are available on www.truepotential.co.uk/fund-prices or by telephoning **0191 500 8807**. UK tax laws may impact your own tax position.
- **True Potential Administration LLP** may be held liable solely on the basis of any statement contained in this document that is misleading, inaccurate or inconsistent with the relevant parts of the **Prospectus** for the Fund.
- The Fund is a sub-fund of an umbrella company. The Prospectus and reports are prepared for the entire entity. The liabilities of each sub-fund are segregated by UK law and the Fund should not be liable for any debts that cannot be paid by another sub-fund.
- There are no other unit classes available other than those detailed in the KIID. There are other funds available in the umbrella. You can convert between unit classes and switch to a different fund by writing to True Potential Administration LLP, Newburn House, Gateway West, Newburn Riverside, Newcastle Upon Tyne, NE15 8NX.
- Details of the **True Potential Administration LLP** remuneration policy are available on www.truepotential.co.uk/fund-documents and a copy will be made available free of charge on request.

This Fund is authorised in the UK and regulated by the Financial Conduct Authority.

True Potential Administration LLP is authorised in the UK and regulated by the Financial Conduct Authority.

This key investor information is accurate as at 16/02/2026